



IPDC/IPDF ACCESS DOORS

AIR MANAGEMENT SYSTEMS

PRODUCT PROPERTIES

ACCESS DOORS are used in air duct systems for controlling fire dampers, control and shut off dampers, batteries and other parts of a duct system. Access doors allow easy admittance to the ventilation ducting for the purpose of inspection and cleaning. Access doors are flat for rectangular ducting and curved for round ducting.

CONSTRUCTION

ACCESS DOORS have been constructed from a galvanized frame with a double-walled panel. Available in flat or curved model. Quick-acting closures see to that taking off and putting back the panel will take no more than a second.

- Temperature range: -70C up to +70C Celsius
- Air-tightness: Correctly installed access doors are air-tight up to at least +5000 Pa and at least -5000 Pa (500mm w.g.)
- Self-adhesive drilling template in each bag

ACCESS DOORS needs to be fitted :

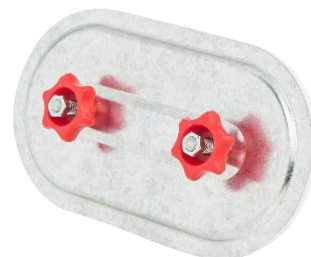
- at least every 7,5 m
- after every change of airflow direction of more than 45 °C
- after every change of duct diameter within the duct network
- before and after every fitting (Dampers, fire dampers, filters, duct fans, duct heaters,...)

Steel plates	Type	Galvanised steel DX51 D+Z275
Sealing Gasket	Type	High quality EPDM cellular sponge gasket
	Dimension	6mm x 15mm
	Density	± 33Kg/m ³
	Temperature range	-40 / 90 °C
Componets Compression System	Screws	2 screws: M8x40 or M10x40 crimped on internal panel
	Springs	2 compression springs
	Knobs	2 plastic knobs with metal insert M8 or M10
Self-adhesive template comes with each door, for accurate cut-out		

ACCESS DOORS are deliverable in several different sizes.

Art. code:

IPDF200x100:	Flat Access door 200x100mm
IPDF300x200:	Flat Access door 300x200mm
IPDF400x300:	Flat Access door 400x300mm
IPDF500x400:	Flat Access door 500x400mm
IPDF600x500:	Flat Access door 600x500mm



Art. code:

IPDC180X80-10:	Curved Access door for Ø 100mm
IPDC180X80-12:	Curved Access door for Ø 125mm
IPDC200X100-14/15:	Curved Access door for Ø 140mm up to 150mm
IPDC200X100-16/18:	Curved Access door for Ø 160mm up to 180mm
IPDC200X100-20/22:	Curved Access door for Ø 200mm up to 224mm
IPDC200X100-25/28:	Curved Access door for Ø 250mm up to 280mm
IPDC200X100-31/35:	Curved Access door for Ø 315mm up to 355mm
IPDC300X200-31:	Curved Access door for Ø 315mm
IPDC300X200-35:	Curved Access door for Ø 355mm
IPDC300X200-40:	Curved Access door for Ø 400mm
IPDC400X300-40:	Curved Access door for Ø 400mm



LIABILITY:

The information contained in this brochure was current on the publication date. DEC INTERNATIONAL reserves the right to make changes in details at any time without prior notice. In order to avoid misunderstandings, any interested party is advised to contact DEC INTERNATIONAL checking for any changes in materials and/or information after this brochure was published.

PLEASE NOTICE:

The consultant is responsible for the actual installation and mounting of the product. The mentioned values with respect to temperatures are not appropriate to be used to determine the physical properties. These properties are also dependent on humidity and the temperature of the air inside and outside of the H.V.A.C. system.

TRADEMARKS:

DEC International and the DEC logo are trademarks, or registered trademarks of Dutch Environment Corporation BV in the Netherlands and/or other countries.





IPDC/IPDF ACCESS DOORS

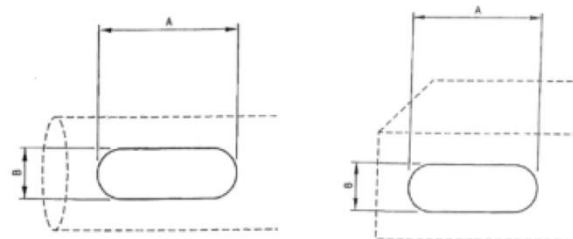
AIR MANAGEMENT SYSTEMS

Selection of curving diameters

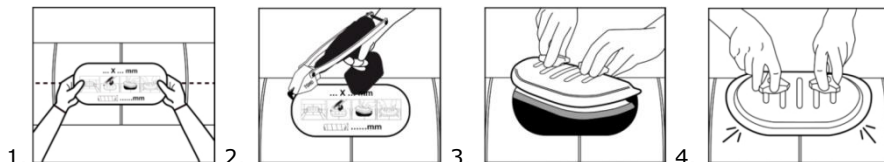
Duct diameter (mm)	Recommended door curving diameter (mm)
80-120	100
121-150	125
151-190	160
191-240	200
241-300	250
301-340	315
341-380	355
381-430	400

Recommendations (based on EN 12097)

ROUND DUCTING		Rectangular ducting	
Duct diameter (mm)	Access door minimum size (mm) AxB	Duct height (mm)	Access door minimum size (mm) AxB
100-200	180x80	200	180x80
200-315	250x150	200-400	300x200
315-500	300x200	400-500	400x300
500	400x300	500	500x400



Application



1. Stick self-adhesive template on to duct (a template is provided with each door)
2. Using Turbo shears or similar cut around template taking care not to exceed the size of the template (the door will function correctly when cut to template size $\pm 0/-3\text{mm}$)
3. Install door by unscrewing the hand knobs until thread is level with top bolt. Using both hands place the door in the hole at an angle.
4. Turn straight and pull out slightly to align. Then tighten knobs.

LIABILITY:

The information contained in this brochure was current on the publication date. DEC INTERNATIONAL reserves the right to make changes in details at any time without prior notice. In order to avoid misunderstandings, any interested party is advised to contact DEC INTERNATIONAL checking for any changes in materials and/or information after this brochure was published.

PLEASE NOTICE:

The consultant is responsible for the actual installation and mounting of the product. The mentioned values with respect to temperatures are not appropriate to be used to determine the physical properties. These properties are also dependent on humidity and the temperature of the air inside and outside of the H.V.A.C. system.

TRADEMARKS:

DEC International and the DEC logo are trademarks, or registered trademarks of Dutch Environment Corporation BV in the Netherlands and/or other countries.

