



## CONNECTDEC Type COMPACDEC 2

SEMI FLEXIBLE CORRUGATED DUCTING

The **CONNECTDEC TYPE COMPACDEC 2** is a 2-layer corrugated semi flexible duct. By the 2-layer construction and type of corrugation the duct can be easily stretched. The duct is fitted with galvanized end caps. According to the need for mounting the end caps can have female/male connection. Standard the end caps and duct are fixated together by an outer ring.

Dimensions and tolerances metal caps according to EN1506:

**Type 1) Male - Male      Type 2) Male - Female      Type 3) Female - Female**

Article code: **CO(1,2, or 3)CD{Ø}/Length** e.g. CO3CD100/1,0 (type 3 Ø100mmx1Mtr)

On customer request the product can be ordered customer specific without outer ring.

Product code **CO3SCD{Ø}/L**

Having no outer ring it limits the operating pressure and max air velocity.

### APPLICATIONS

- **THE Solution to over bridge inaccuracy in measurements.**
- **Saves installation time and material.**
- Female side can be combined with our air valves (e.g., Rondo, DAV or DVSC)
- Suitable for mechanical air supply systems and air conditioning systems

### SPECIFICATIONS

Article code: CO(1,2,3)CD{Ø}/L  
Temperature range: -30 °C to 250 °C  
Peak +400°C  
Operating pressure: up to +3000 Pa  
CO3SCD{Ø}/L up to +1500Pa  
Operating air velocity: max. 30 m/s  
CO3SCD{Ø}/L max. 10 m/s  
Min. bending radius: 1 x Ø  
Standard diameter range: 80 – 315 mm  
Standard length: 0.5+1.0 meter

### CONSTRUCTION

Total layers: 2 layers of 60µ

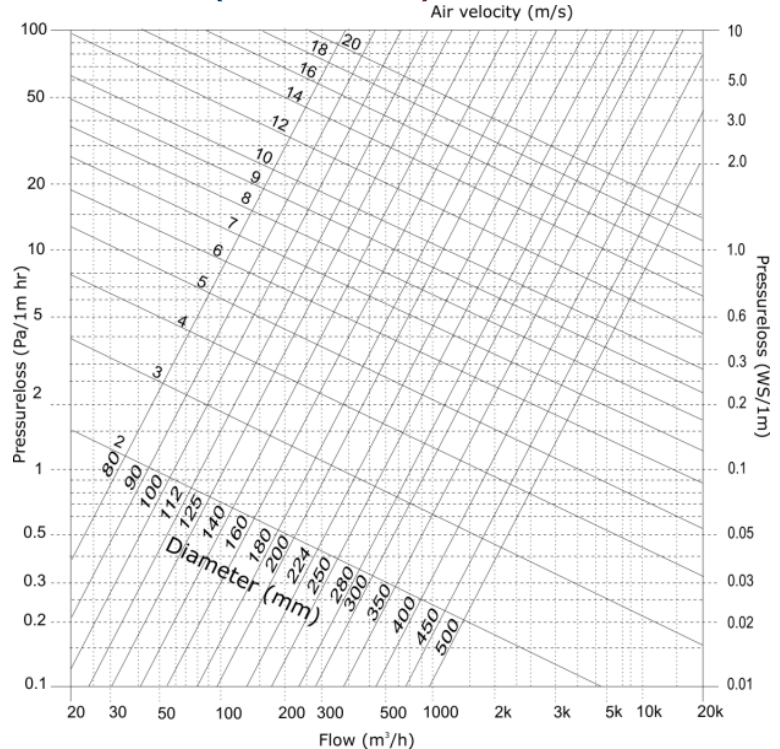
### CLASSIFICATIONS

According:  
EU (EN 13501-1): A1  
UK (BS476): Part 4, 6, 7 and 20  
FR (NF): M0  
DE (DIN4102): A1

### STANDARDS

Fulfilling:  
NEN-EN13180 Yes  
REACH Yes  
ROHS Yes

### PRESSURE LOSS (STRAIGHT DUCT)



#### LIABILITY:

The information contained in this brochure was current on the publication date. DEC INTERNATIONAL reserves the right to make changes in details at any time without prior notice. In order to avoid misunderstandings, any interested party is advised to contact DEC INTERNATIONAL checking for any changes in materials and/or information after this brochure was published.

#### PLEASE NOTICE:

The consultant is responsible for the actual installation and mounting of the product. The mentioned values with respect to temperatures are not appropriate to be used to determine the physical properties. These properties are also dependent on humidity and the temperature of the air inside and outside of the H.V.A.C. system.

#### TRADEMARKS:

CONNECTDEC, COMPACDEC, the DEC logo and DEC International are trademarks, or registered trademarks of Dutch Environment Corporation BV in the Netherlands and/or other countries.

#### RESTRICTIONS:

The CONNECTDEC ducts are not suitable for discharging combustion products from open fireplaces and oil-fired boilers. Neither are the ducts suitable for transporting air with a high concentration of acid and base.



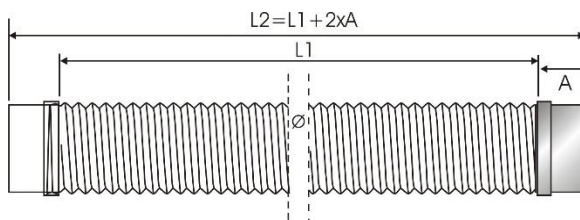


## CONNECTDEC Type COMPACDEC 2

SEMI FLEXIBLE CORRUGATED DUCTING

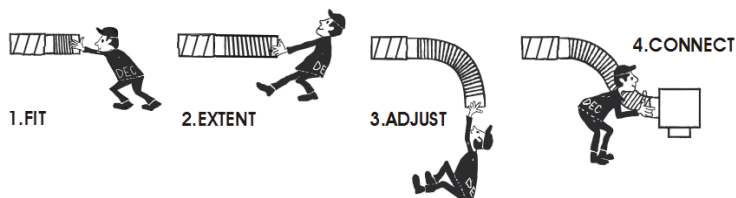
### DIMENSIONS Metal caps

According to EN-1506			
D <sub>nom</sub> (mm)	D <sub>female</sub> (mm)	D <sub>male</sub> (mm)	Tol.
080	80.5	79.3	+0 ; -0.5
100	100.5	99.3	+0 ; -0.5
125	125.5	124.3	+0 ; -0.5
150	150.6	149.3	+0 ; -0.6
160	160.6	159.3	+0 ; -0.6
200	200.7	199.3	+0 ; -0.7
250	250.8	249.3	+0 ; -0.8
315	315.9	314.3	+0 ; -0.9



Extended length L1 = 0.5/1.0 Mtr +0.2/ -0.0  
Extended length L2 = L1 + 2xA  
Length A = 80mm

### HOW TO INSTALL:



#### LIABILITY:

The information contained in this brochure was current on the publication date. DEC INTERNATIONAL reserves the right to make changes in details at any time without prior notice. In order to avoid misunderstandings, any interested party is advised to contact DEC INTERNATIONAL checking for any changes in materials and/or information after this brochure was published.

#### PLEASE NOTICE:

The consultant is responsible for the actual installation and mounting of the product. The mentioned values with respect to temperatures are not appropriate to be used to determine the physical properties. These properties are also dependent on humidity and the temperature of the air inside and outside of the H.V.A.C. system.

#### TRADEMARKS:

CONNECTDEC, COMPACDEC, the DEC logo and DEC International are trademarks, or registered trademarks of Dutch Environment Corporation BV in the Netherlands and/or other countries.

#### RESTRICTIONS:

The CONNECTDEC ducts are not suitable for discharging combustion products from open fireplaces and oil-fired boilers. Neither are the ducts suitable for transporting air with a high concentration of acid and base.

