



## COMPACDEC 2

SEMI FLEXIBLE CORRUGATED DUCTING

**COMPACDEC 2** is a superb flexible duct constructed of two layers of corrugated aluminum. Due to the closing seam, a high airtightness and flexibility is achieved.

### APPLICATION

- Suitable for mechanical air supply systems and air conditioning systems.
- Systems, where vapors should be exhausted
- Above mentioned systems, where a M0 or A1 classification is required

### SPECIFICATIONS

Article code: DCD2{Ø}  
 Temperature range: -30°C to 250°C  
 Peak 400°C  
 Operating pressure: up to +3000 Pa  
 Operating air velocity: max. 30 m/s  
 Bending radius: min. 1 x Ø  
 Standard diameter range: 50 – 500 mm  
 Standard length: 5 mtr

### CONSTRUCTION

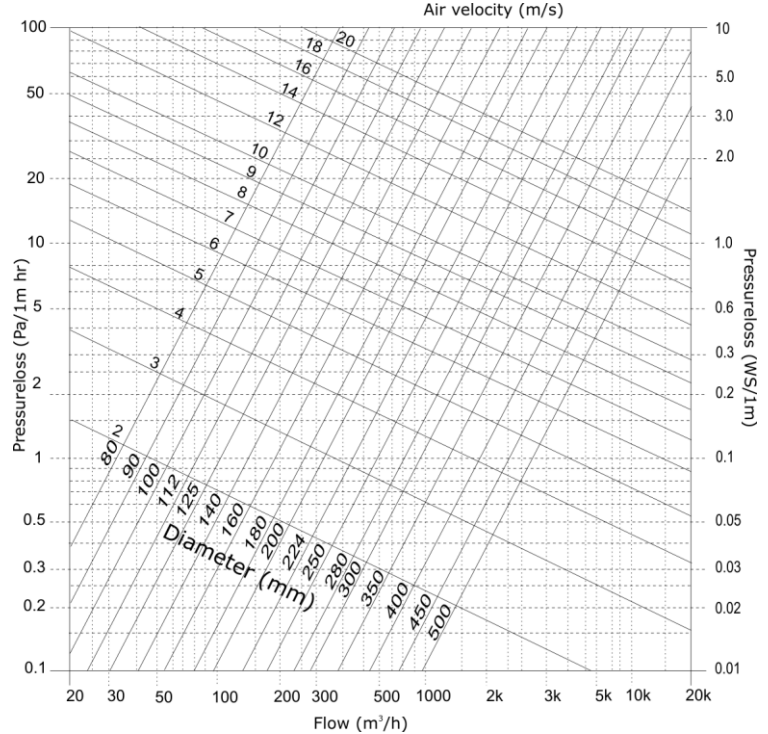
Total layers:  
 Ø 050-065 2 layers 60 my  
 Ø 071-250 2 layers 50 my  
 Ø 280-500 2 layers 60 my

### CLASSIFICATIONS

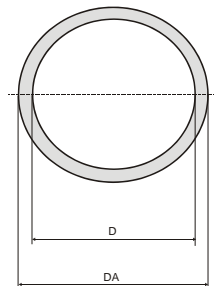
EU (EN 13501-1): A1  
 UK (BS476): Part 4, 6, 7 and 20  
 FR (NF): M0  
 DE (DIN4102): A1

**Standards** Fulfilling:  
 NEN-EN13180 Yes  
 REACH Yes  
 ROHs Yes

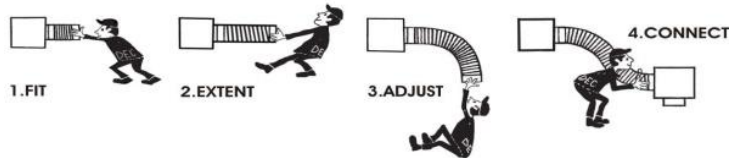
### PRESSURE LOSS (STRAIGHT DUCT)



D(mm)	Tolerance	DA (mm)
050	+1,0 / -0	057
060	+1,0 / -0	067
075	+1,0 / -0	082
080	+1,0 / -0	087
090	+1,0 / -0	097
100	+1,0 / -0	107
125	+1,0 / -0	132
140	+1,0 / -0	147
150	+1,5 / -0	157
160	+1,5 / -0	167
180	+1,5 / -0	187
200	+1,5 / -0	207
224	+1,5 / -0	231
250	+2,0 / -0	257
280	+2,0 / -0	287
300	+2,0 / -0	307
315	+2,0 / -0	322
355	+2,0 / -0	362
400	+2,0 / -0	407
450	+2,5 / -0	457
500	+2,5 / -0	507



### HOW TO INSTALL



#### LIABILITY:

The information contained in this brochure was current on the publication date. DEC INTERNATIONAL reserves the right to make changes in details at any time without prior notice. In order to avoid misunderstandings, any interested party is advised to contact DEC INTERNATIONAL checking for any changes in materials and/or information after this brochure was published.

#### PLEASE NOTICE:

The consultant is responsible for the actual installation and mounting of the product. The mentioned values with respect to temperatures are not appropriate to be used to determine the physical properties. These properties are also dependent on humidity and the temperature of the air inside and outside of the H.V.A.C. system.

#### TRADEMARKS:

COMPACDEC, The DEC logo and DEC International are trademarks, or registered trademarks of Dutch Environment Corporation BV in the Netherlands and/or other countries.

#### RESTRICTIONS:

The COMPACDEC ducts are not suitable for discharging combustion products from open fireplaces and oil-fired boilers. Neither are the ducts suitable for transporting air with a high concentration of acid and base.

